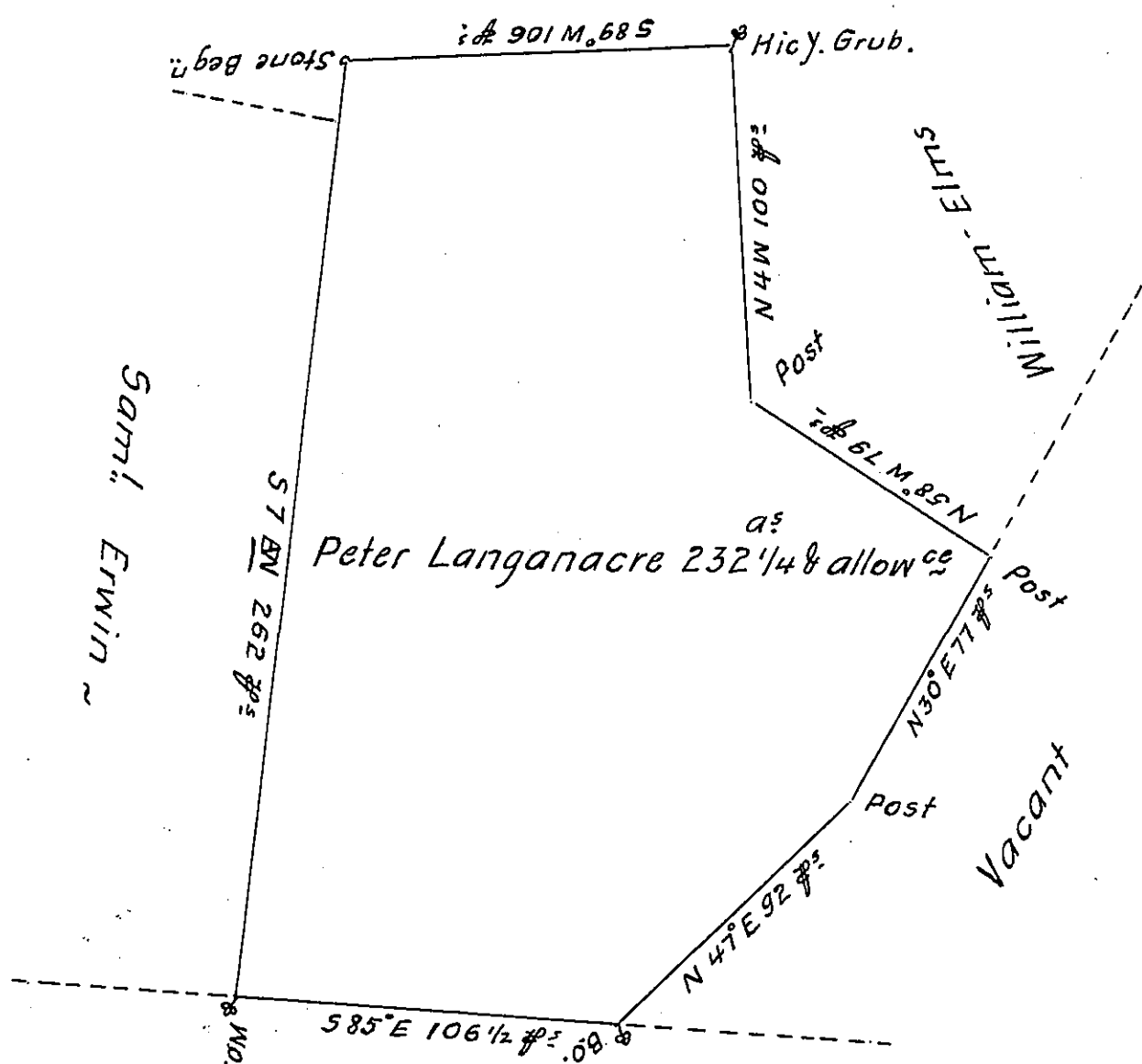


Henry Hall



Saml. Erwin

S 70° W 262 1/2

as Peter Langanacre 232 1/4 & allow 6 1/4

S 71° E - William

Vacant

Temporary Line

A Draught of a Tract of Land Situate in Antrim Township  
 Cumberland County containing Two hundred and Thirty two Acres  
 and one fourth of an Acre and the Usual Allowance of Six Acres  
 7/8 Cent for Roads ~ Survey'd January 13<sup>th</sup> 1767. in Pursuance of a  
 Warrant Dated the first Day of August 1766. ~

Now Washington Top. Franklin County.

To John Lukens Esq<sup>r</sup>.  
 Surveyor General. ~

John Armstrong  
 D.S.

IN TESTIMONY that the above is a copy of the original remaining on file in  
 the Department of Internal Affairs of Pennsylvania, made  
 conformably to an Act of Assembly approved the 16th day of  
 February, 1833, I have hereunto set my Hand and caused  
 the Seal of said Department to be affixed at Harrisburg,  
 this fourth day of August 1905.

*George P. Brown*  
 Secretary of Internal Affairs.